



# **Prevocational Services Decision Trees:**

**A Tool to Assist Care Managers with  
Prevocational Service Authorization  
and Re-authorization**

**Issue Date: July 19, 2010**

**Applicability: Family Care and  
Family Care Partnership Programs**

## **All members will fall into one of the following two categories:**

### **1. New Entrants to Prevocational Services:**

New entrants are defined as:

- All members enrolled as of September 1, 2010 who did not participate in prevocational services prior to that date.

OR

- Any member who enrolls after September 1, 2010 and did not participate in prevocational services funded by the CIP waiver, the IRIS waiver or a county human service agency prior to that date.

### **2. Current Prevocational Service Recipients:**

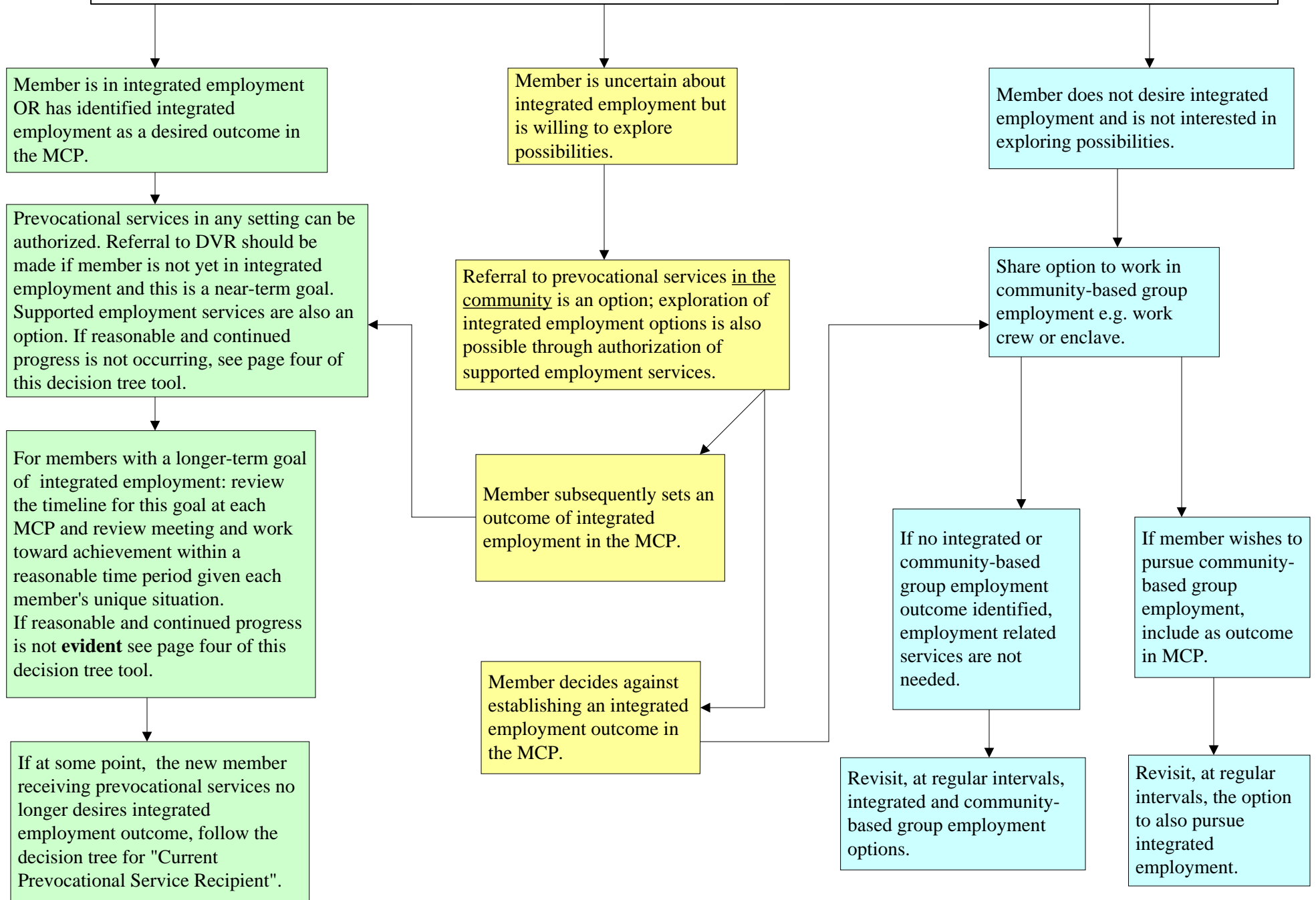
Current prevocational service recipients are defined as:

- All members enrolled as of September 1, 2010 who participated in prevocational services prior to that date

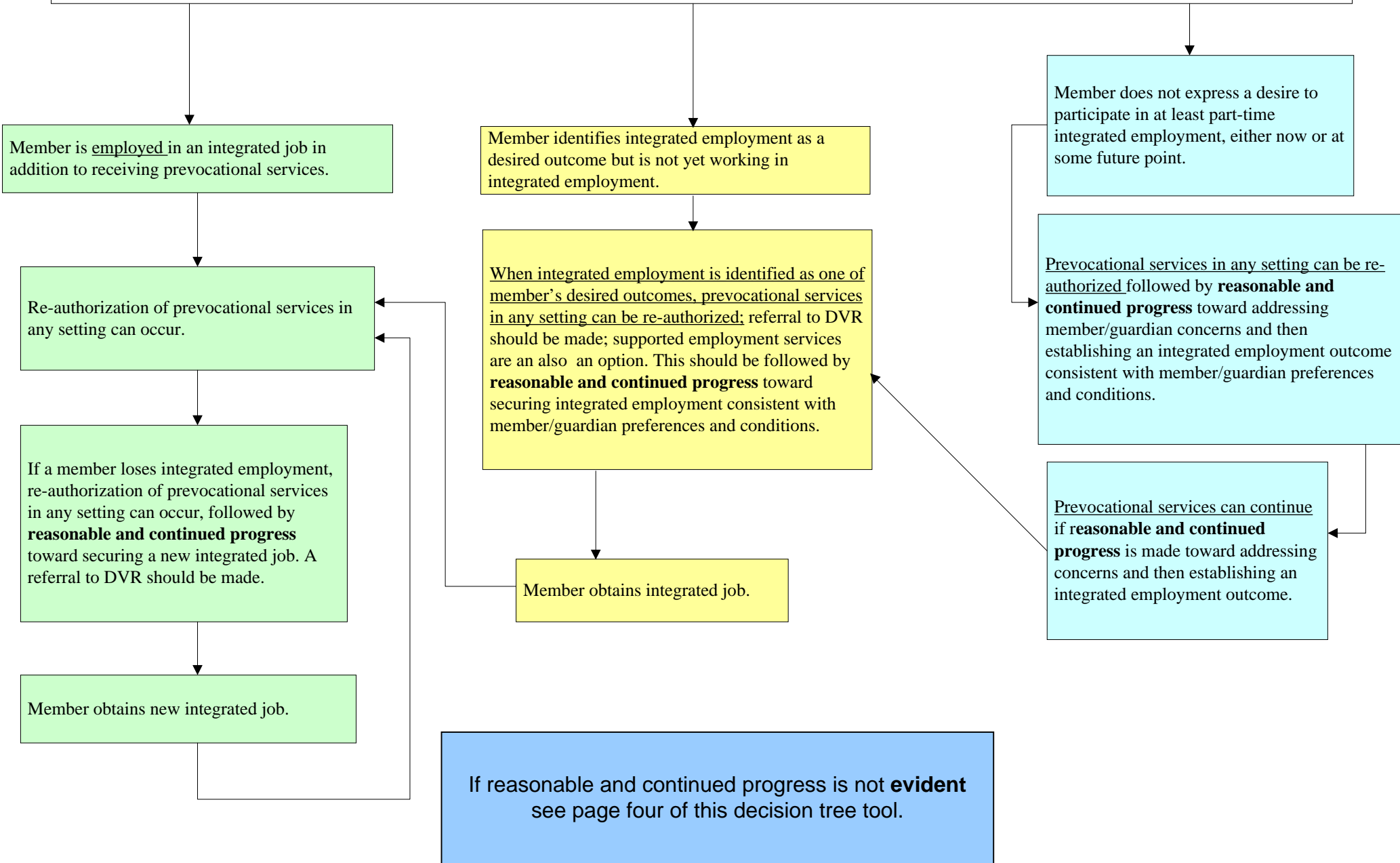
OR

- Any member who enrolls after September 1, 2010 and participated in prevocational services funded by the CIP waiver, the IRIS waiver or a county human service agency prior to that date.

# New Entrant to Prevocational Services



# Current Prevocational Service Recipient



## Guidelines if Reasonable and Continued Progress is Not Being Made

